

Input data for the 2007 OMP

S.J. Johnston and D.S. Butterworth

The following tables report the input data required by the new area-disaggregated OMP for calculating the 2007 TAC. Note that the 2006 somatic growth rate values are preliminary and will be updated by OLRAC shortly.

Table 1: Hoopnet CPUE (from Glazer 2007a, b). No Hoopnet CPUE data are available for A7.

Year	Area 1+2	Area 3+4	Area 5+6	Area 8
1992	1.010	1.039	0.838	0.719
1993	0.752	1.553	0.633	0.838
1994	0.601	0.485	0.244	1.267
1995	0.861	1.198	0.456	1.372
1996	1.164	1.557	0.894	1.161
1997	1.007	1.023	0.860	1.405
1998	0.880	1.004	0.560	1.748
1999	0.641	0.857	0.891	1.577
2000	0.958	0.506	1.055	1.552
2001	1.201	3.024		1.495
2002	1.196	0.755	1.244	1.094
2003	0.954	1.382	0.778	0.975
2004	0.928	0.579	0.692	1.100
2005	1.474	0.540	1.446	0.884
2006	1.382	0.423	1.087	0.948

Table 2: Trap CPUE (from Glazer 2007c). Note that no recent trap CPUE data are available for A1-2, A3-4 and A5-6.

Year	Area 7	Area 8
1992	0.454	0.884
1993	0.565	0.927
1994	0.291	0.879
1995	0.566	1.071
1996	1.035	1.033
1997	1.246	1.045
1998	1.574	1.041
1999	1.285	1.124
2000	1.383	1.280
2001	2.235	1.499
2002	1.711	1.747
2003	1.531	1.224
2004	1.171	1.195
2005	0.591	1.311
2006	0.726	1.308

Table 4: FIMS CPUE (normalised). (L. Scott, pers. commn).

	Dassen A7	Saldanha A5-6	Lamberts A3-4	Cape A8
1992	0.986	5.672	0.960	1.046
1993	0.820	1.097	0.055	1.556
1994	0.348	1.664	0.165	0.965
1995	0.110	0.476	2.332	1.084
1996	0.476	0.983	4.938	0.785
1997	0.739	0.121	0.027	0.934
1998	1.088	1.664	1.399	1.141
1999	0.000	0.000	0.000	0.859
2000	0.250	0.348	1.440	0.702
2001	3.123	0.182	0.305	1.020
2002	1.407	0.696	0.897	0.776
2003	1.765	0.333	0.244	0.864
2004	1.661	0.106	0.277	0.794
2005	0.703	0.386	0.856	1.420
2006	0.523	0.273	0.105	1.053

Table 5: Somatic growth of a 70mm male lobster (OLRAC 2005 for 1992-2004 values, OLRAC pers. commn for 2005 value, and OLRAC 2007 for 2006 value).

	A12	A34	A56	A7	A8
1992	4.44	3.55	4.05	2.66	2.69
1993	3.22	3.82	4.32	4.28	2.96
1994	3.31	4.13	4.63	3.78	3.27
1995	4.05	4.28	4.78	4.79	3.42
1996	4.66	4.96	5.46	6.56	4.1
1997	4.04	3.84	4.34	4.62	2.98
1998	3.88	3.38	3.87	3.99	2.51
1999	5.72	3.55	4.05	3.66	2.69
2000	4.23	4.77	5.27	5.24	3.91
2001	5.44	4.07	4.57	4.2	3.21
2002	4.37	4.05	4.55	4.84	3.19
2003	3.47	3.18	3.68	2.68	2.32
2004	3.59	3.71	4.2	2.65	2.84
2005	3.63	2.98	3.59	3.03	2.42
2006	3.17	2.94	3.55	3.58	2.39

Using the above data as input into the new area-disaggregated OMP, Table 5 below reports the resultant TAC estimates for 2007 for both the “2445” MT and “2401” MT tuning. The Global TAC is thus a 10% decrease from the 2006 value of 2857 MT.

Table 5: OMP 2007 estimates.

	Global TAC (Commercial + recreational)	Commercial only	Offshore quotas	Near shore quotas	Recreational
Total	2571	2314	1754	560	257
A1-2	35	30	0	30	5
A3-4	127	95	5	90	32
A5-6	72	40	0	40	32
A7	874	863	863	0	10
A8+	1463	1286	886	400	177

References

Glazer, J.P. 2007a. Updated area-disaggregated standardized CPUE indices in the West Coast rock lobster hoopnet fishery. MCM document, WG/07/07/WCRL5.

Glazer, J.P. 2007b. An updated index of abundance for Area 1+2 West Coast rock lobster. MCM document, WG/07/07/WCRL7.

Glazer, J.P. 2007c. Updated area-disaggregated standardized CPUE indices in the West Coast rock lobster trapboat fishery. MCM document, WG/07/07/WCRL6.

OLRAC. 2005. Updated male somatic growth rate estimates for input into the spatially disaggregated assessment for West Coast rock lobster. MCM document, WG/09/05/WCRL17.

OLRAC. 2007. Updated male somatic growth rate estimates for input into the OMP for West Coast rock lobsters. MCM document, WG/08/07/WCRL12.

Figure 1: Hoopnet CPUE trends.

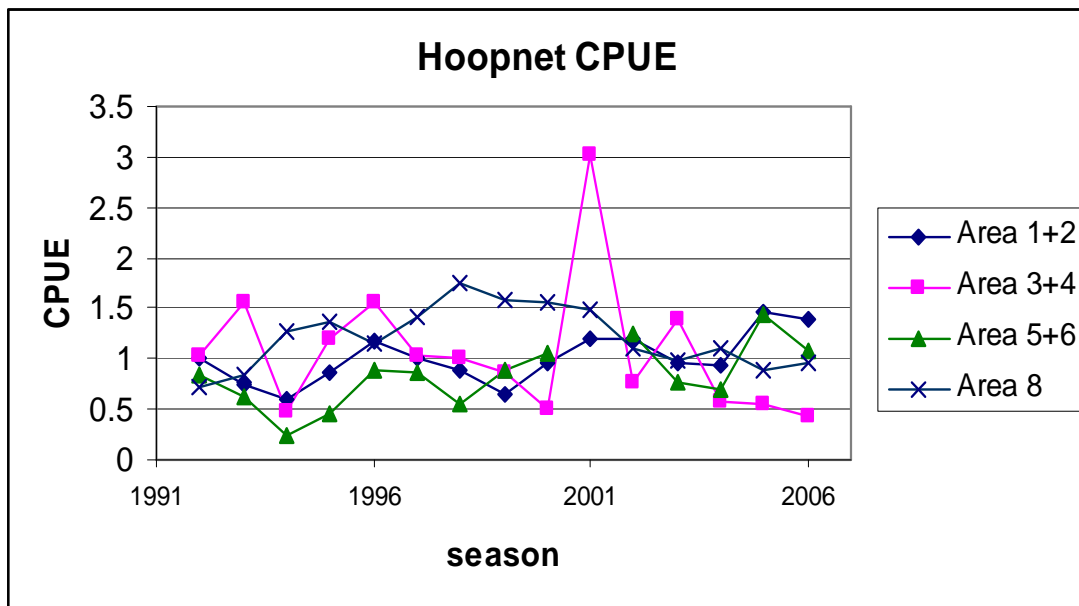


Figure 2: Trap CPUE trends.

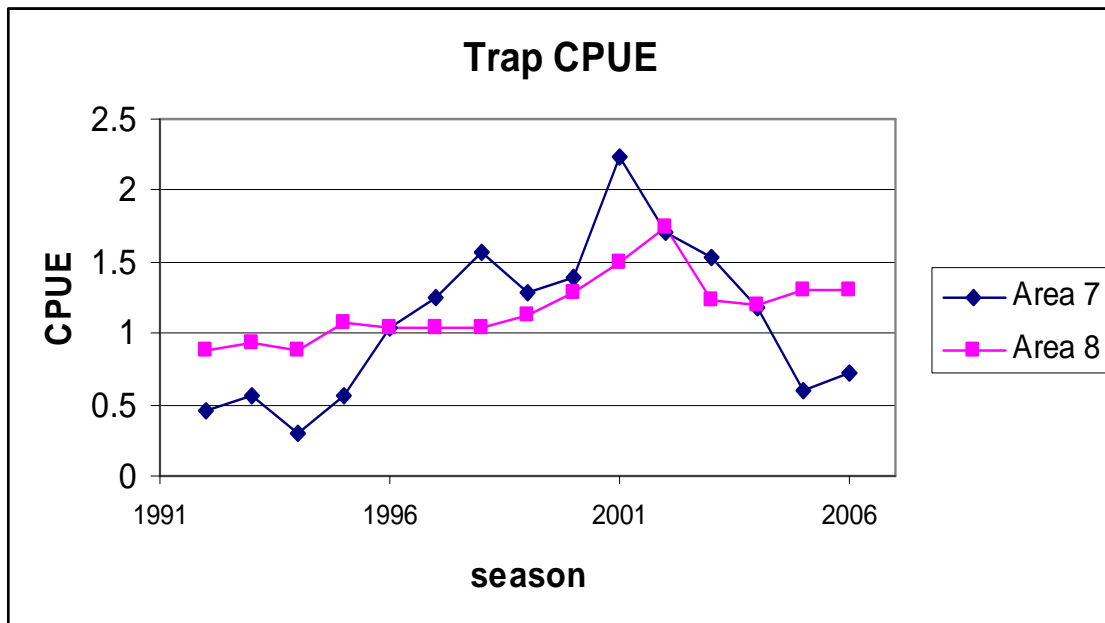


Figure 3: FIMS values. Note that there are no FIMS values available for 1999 for A34, A56 and A7.

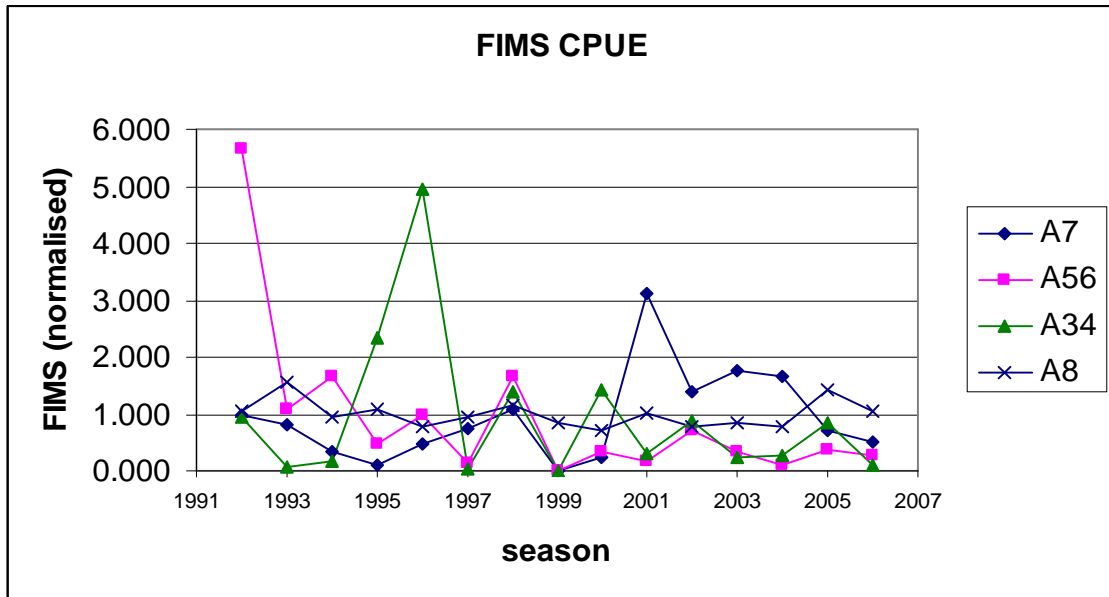


Figure 4: Somatic growth (70mm male lobster) trends.

