

**Resource indices for each super-area compared with the threshold levels below which
Exceptional Circumstances is invoked**

S.J. Johnston

Figures 1-5 report the resource indices available for each super-area, the combined index that is calculated across the different indices, and finally the $J_{A,Y}$ values which are used to determine whether Exceptional Circumstances (ECs) have been triggered or not. On each figure, the bottom plot shows a solid red horizontal line indicating the “threshold” value, below which exceptional circumstances would be invoked.

Figures 2,3 and 5 show respectively that super-areas 3+4, 5+6 and 8+ are well clear of their exceptional circumstances thresholds.

Area 1+2 remains very close to crossing the threshold, but at least the most recent hoopnet CPUE shows an increase (Figure 1).

Area 7 has dropped further below the threshold (Figure 4). However since both the recent trap and FIMS CPUE indices show increases over the previous year, the trend in the combined index will hopefully soon start reversing.

Figure 1: Area 1+2 indices. The flat solid line shows the EC threshold level.

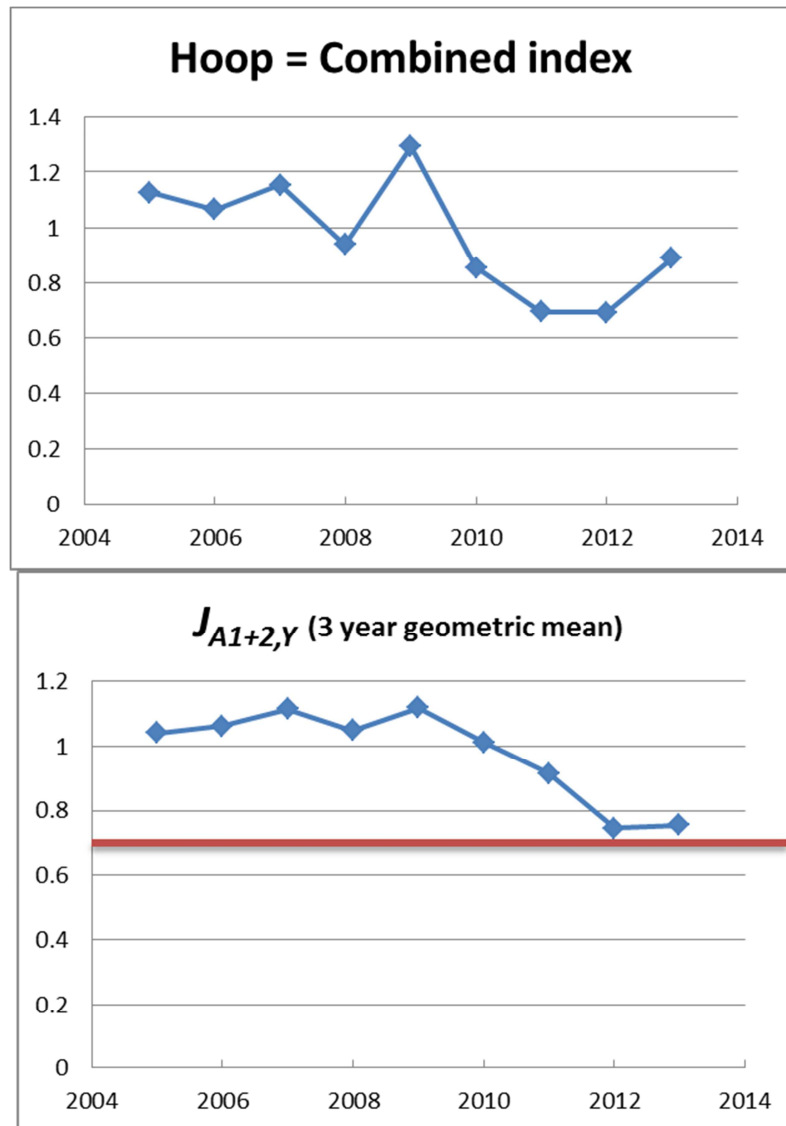


Figure 2: Area 3+4 indices. The flat solid line shows the EC threshold level.

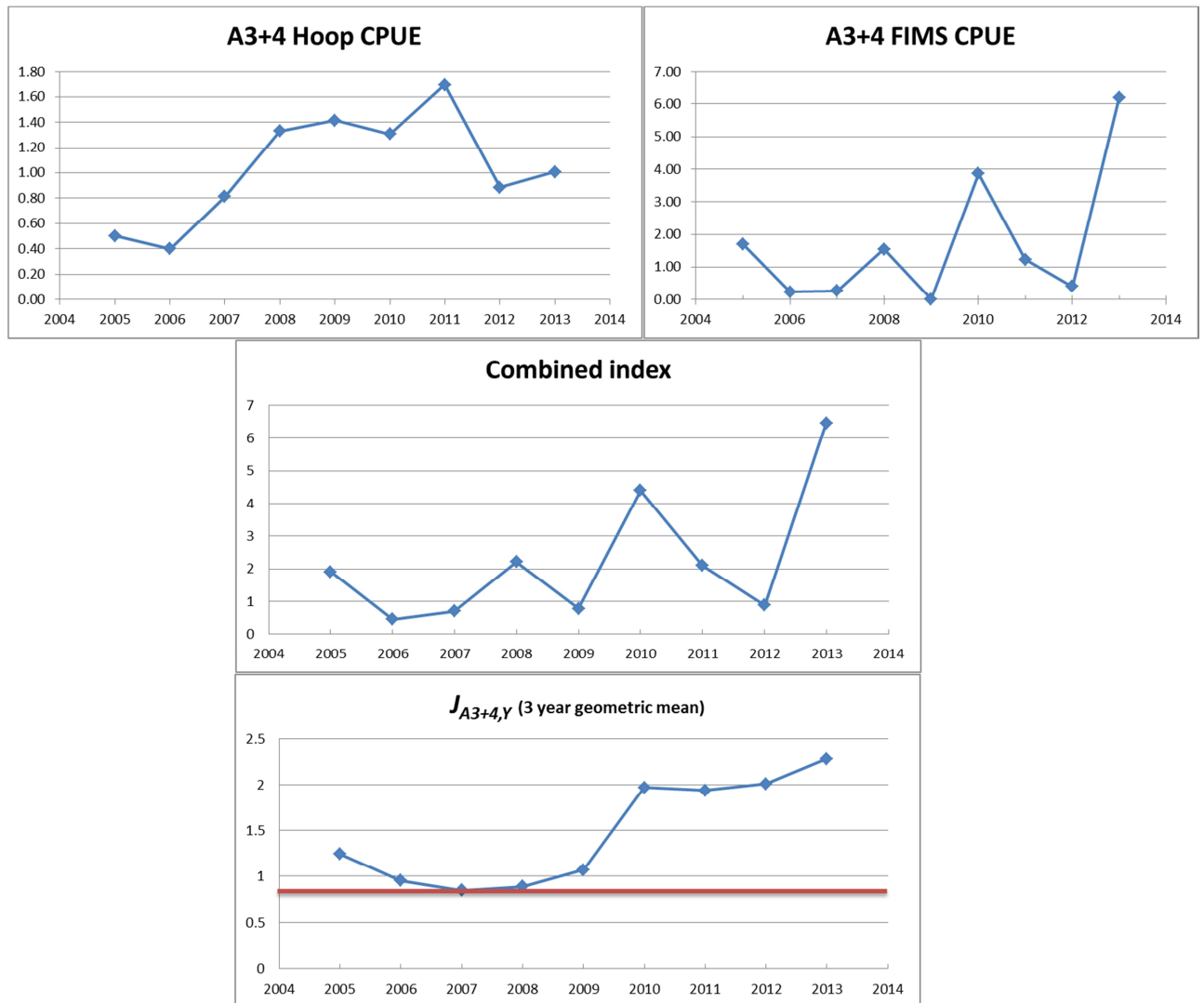


Figure 3: Area 5+6 indices. The flat solid line shows the EC threshold level.

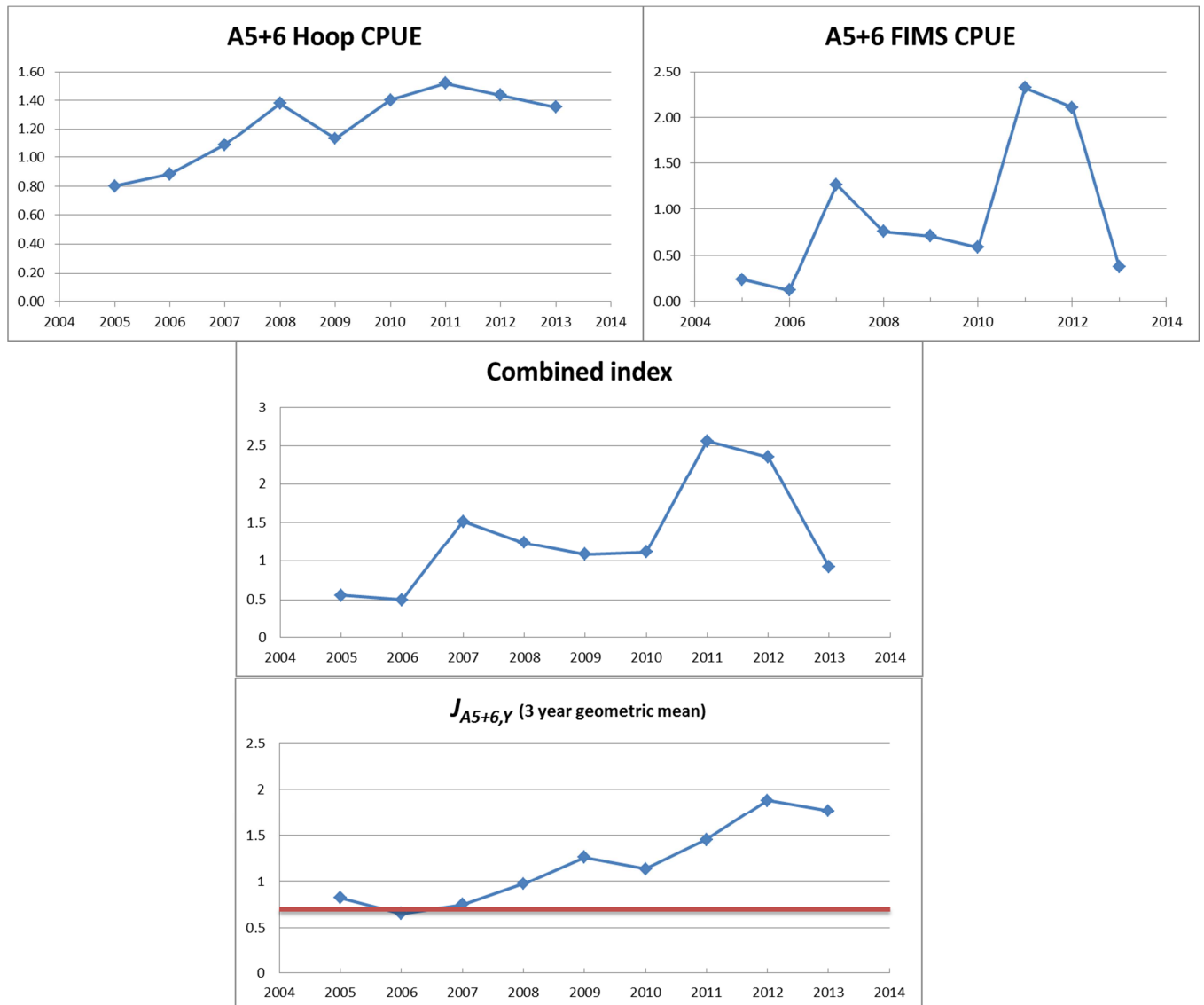


Figure 4: Area 7 indices. The flat solid line shows the EC threshold level.

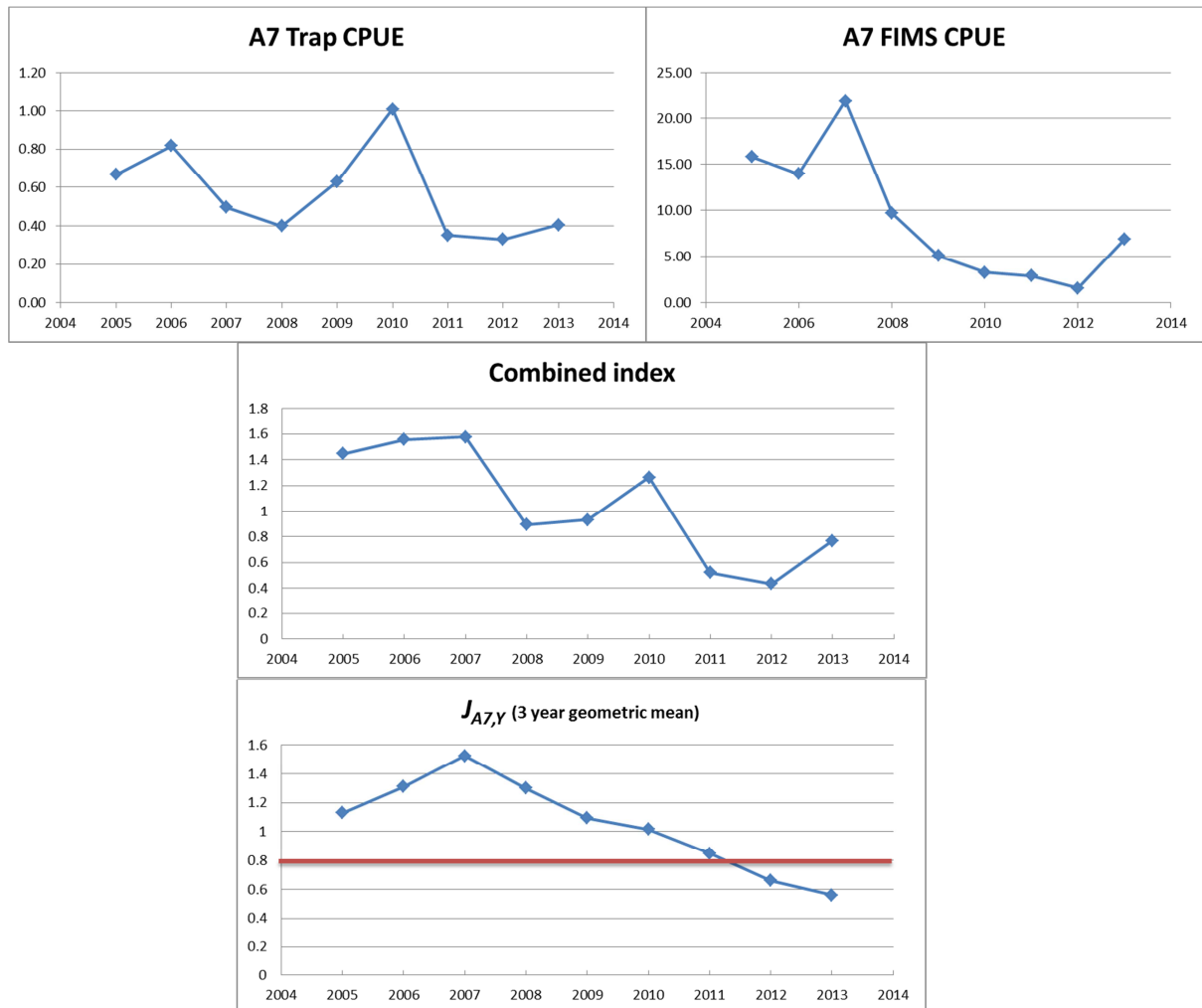


Figure 5: Area 8+ indices. The flat solid line shows the EC threshold level.

